



## TechCMS™ Content Management System

Dayton T. Brown has your project data under control.

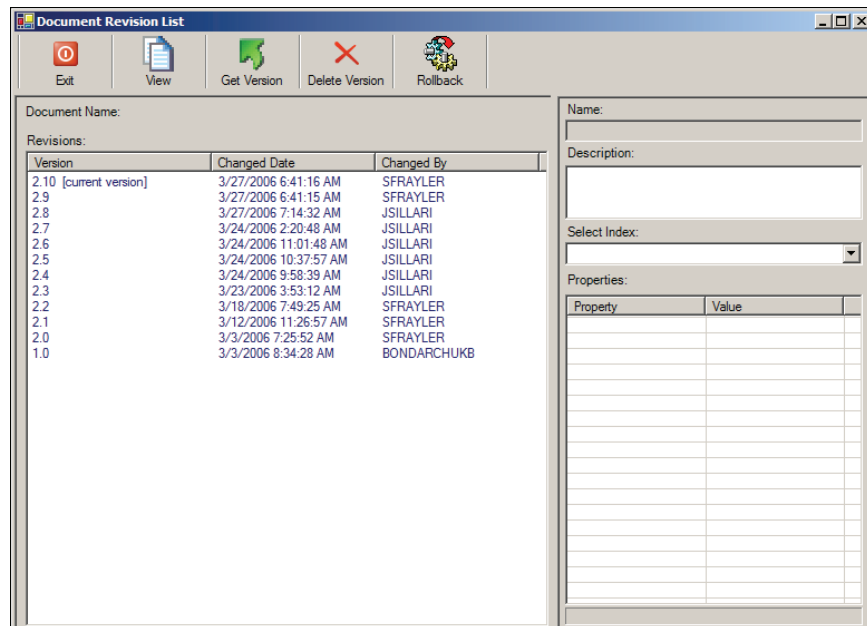
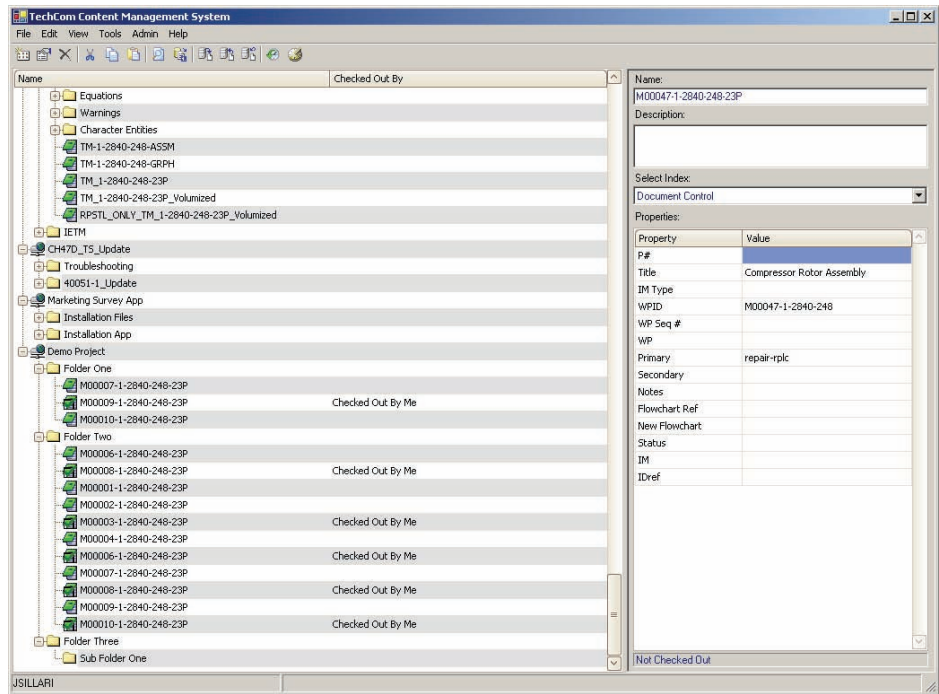
TechCMS™ is our project-oriented content management solution. It is ideally suited for small- and medium-sized businesses where right-sizing content management systems has been traditionally problematic.

TechCMS™ controls all types of content:

text, graphics, spreadsheets, raw data, XML/SGML with practically unlimited flexibility. It provides typical CMS functionality: file locking, check-in/check-out, user rights management, auditing, multiple indexing levels per file, among other features. However,

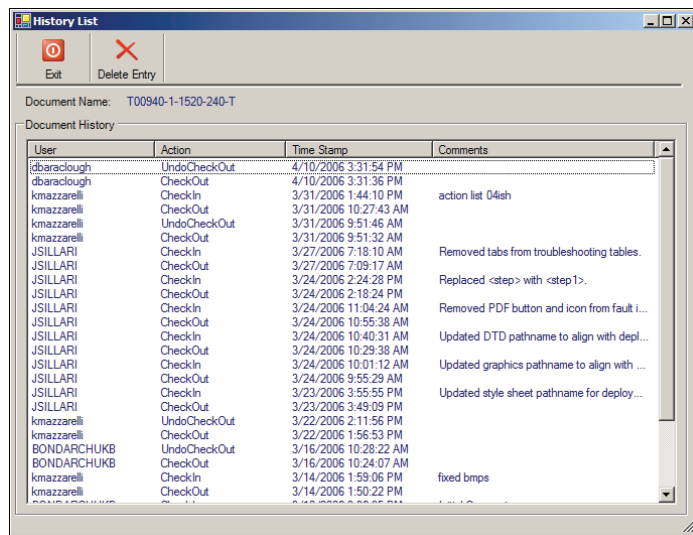
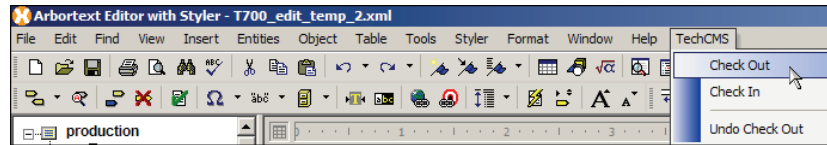
it does this with an easy-to-use and familiar drag-and-drop user interface.

TechCMS™ users of all backgrounds and experience can come up to speed with a minimum of downtime. Standard Windows® interface conventions like file trees, drag-and-drop, and shift-select make TechCMS™ easy to master.





Moreover, TechCMS™ seamlessly integrates with structured-content enterprise publishing applications (PTC's Arbortext, for example), and it can be customized to integrate into your workflow or publishing processes as needed. User working in their native application editing package and still access TechCMS™ without leaving their familiar environment.



TechCMS™ supports workflow-oriented control of project-related content. File permissions can be set according to any role in your project organization: project manager, graphics artist, technical writer, quality analyst, team leader, and so on. Historical information for each version of a file is maintained in the TechCMS™ database so changes can be tracked quickly and easily.

Project reports can be output from the TechCMS™ database to suit a

variety of needs. TechCMS™ relies on standard SQL calls to provide seamless integration with Microsoft Access® and other major database reporting tools.

Complex XML-based queries into well-formed content can return meaningful data from the TechCMS™ database. TechCMS™ supports query construction using the W3C-recommended XPath syntax to extract information directly from structured content. Furthermore, it can use the extracted data to populate the content database so, for example, the title of a document can be automatically inserted into the database without manual entry.

For more information or to request a quote, visit us at: <http://www.dtb-infopros.com/info-content-management-01.asp>.

